



An oases Community Learning Activity
at the Augustine Centre 2 Minona Street Hawthorn

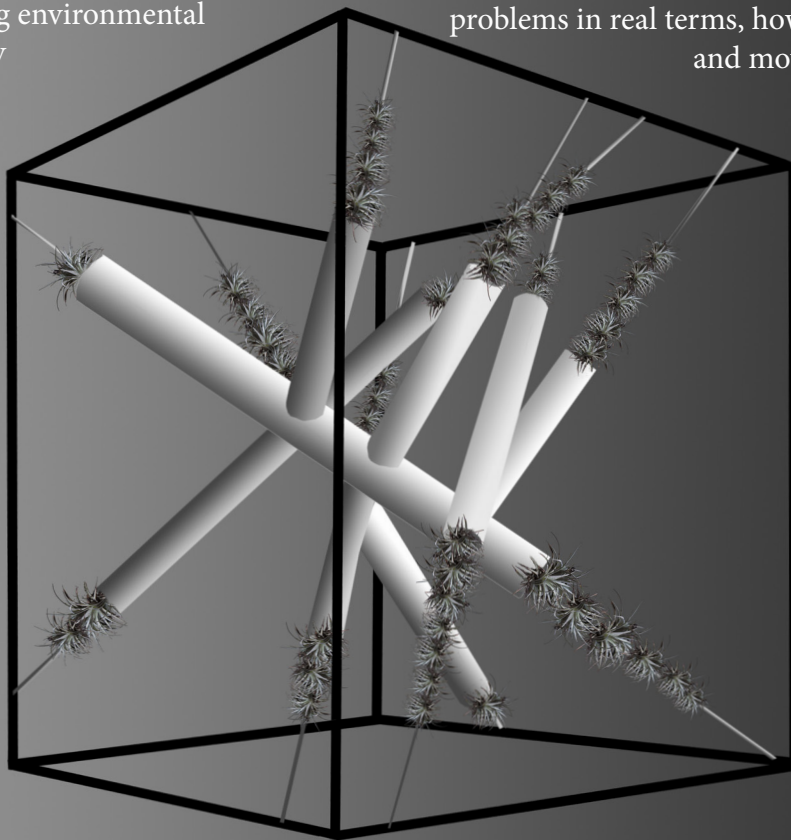
Oases breakfast: Saturday February 5 - 9am-11am

Art & Environment Beyond Comment!

by Ecco Artist Lloyd Godman

For decades artists have made confronting and constructive comment about environmental issues, but so often they fall victim the very issues and consumer society they critique. How can they step beyond comment an contribute to solving environmental is beyond sustainability super-sustainable? problems in real terms, how can they make art that and moves into the world of the

...the largest photo-know of is the planet grows, dies back, the seasons, the "pho is our planet alters. intervention plays a forming the image of



sensitive emulsion we earth. As vegetation changes colour with tographic image" that Increasingly human larger role in trans the globe we inhabit.

Lloyd Godman eco logical artist - 2006

"Lloyd Godman's twin careers of serious and successful organic gardener and practicing artist of great creative energy converge in new and constantly surprising ways to make art about the ecological concerns that underly his gardening. Over almost three decades his art has widened out from relatively traditional landscape photography to include elements of performance, audience participation art and multimedia installation to explore the tensions between electronic consumer society and the ecosystem."

Artlink magazine - Ecology: Everyone's Business - Vol 25 no 4 - Dec - Jan 2006

www.lloydgodman.net

Time 9am-11am breakfast

Cost waged \$25, unwaged \$15

RSVP to OASES 03 9819 3502 or email info@oases.edu.au

Venue: Augustine Centre 2 Minona Street Hawthorn

Melway ref: 45, E11 (near Auburn and Glenferrie train stations)



Augustine Centre



Oases Programs in Integrative and Transformative Studies - learning for personal growth and global response-ability