

GUIDE INFORMATION

Tillandsia



Why a PDF?

It was intended to offer the publication as a print on demand book. But as it grew to such a large size, the cost would have been prohibitive, making it beyond the reach of many Tillandsia enthusiasts and those new to these amazing plants - so I decided to make it affordable and accessible by offering it as a series of interactive PDFs ebooks. This allows me to keep working on the project and offering an a new version on a regular basis. While it loses the feel of a book it offers other features that a hard copy book can not.

Extensive information on Tillandsias

Consequently, the 2020 version is broken into 6 separate documents, and when ordered you will receive the very latest version. Each is a interactive PDF E book that links to the other documents. This means key words are linked to relevant information on other pages, so the document is easy to navigate and find information. Included is also a copy of *Working with Plants*.

- Contents includes:
- Over 1500 pages
- Over 390 plant entries
- Over 1600 photographs
- Over 140 illustrations and renders
- Over 50 maps
- Over 100 sound files
- And 35- charts

Introduction - Diversity & range - Tillandsias and the Bromeliad Family - Taxonomy- The subfamily Tillandsioideae - Evolution of Tillandsias - A changing climate & adaptation - Collecting Tillandsias - Growing Tillandsias - Tillandsia pests - Tillandsias sunburn, rot & dehydration - Out door culture - Indoor culture - Light - Air movement - Tillandsia morphology - (plant parts) - Biology of Bromeliads - Cam Cycle - crassulacean acid metabolism) - Leaf shape & cross-section - Tillandsia flowers - Pollinating Tillandsia flowers- Tillandsia seeds - Seed germination - Asexual reproduction - Stimulating flowering - Transporting Tillandsias - Mounting Tillandsias - Mounting methods - Fragrant Tillandsias Fertilizer - A little bit of history - Tillandsia gallery installations - Living plant sculptures - Urban experiments - Architectural applications - A selection of Tillandsia

Comments on the 2019 version

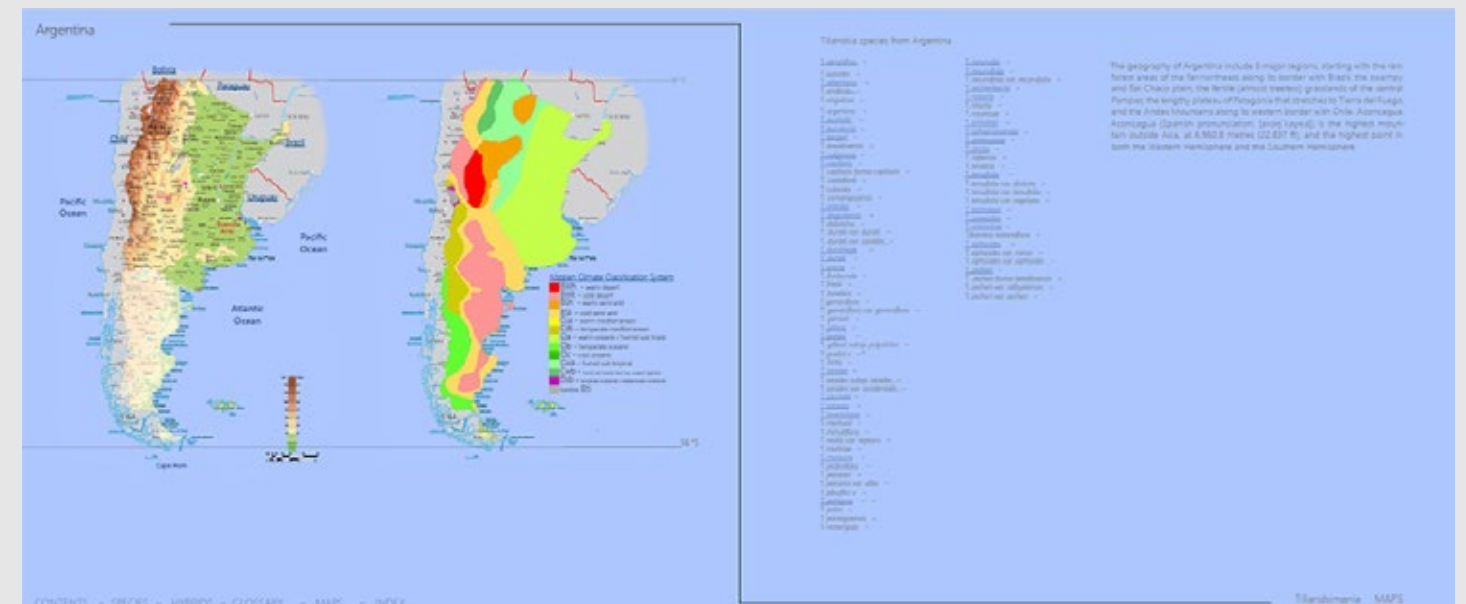
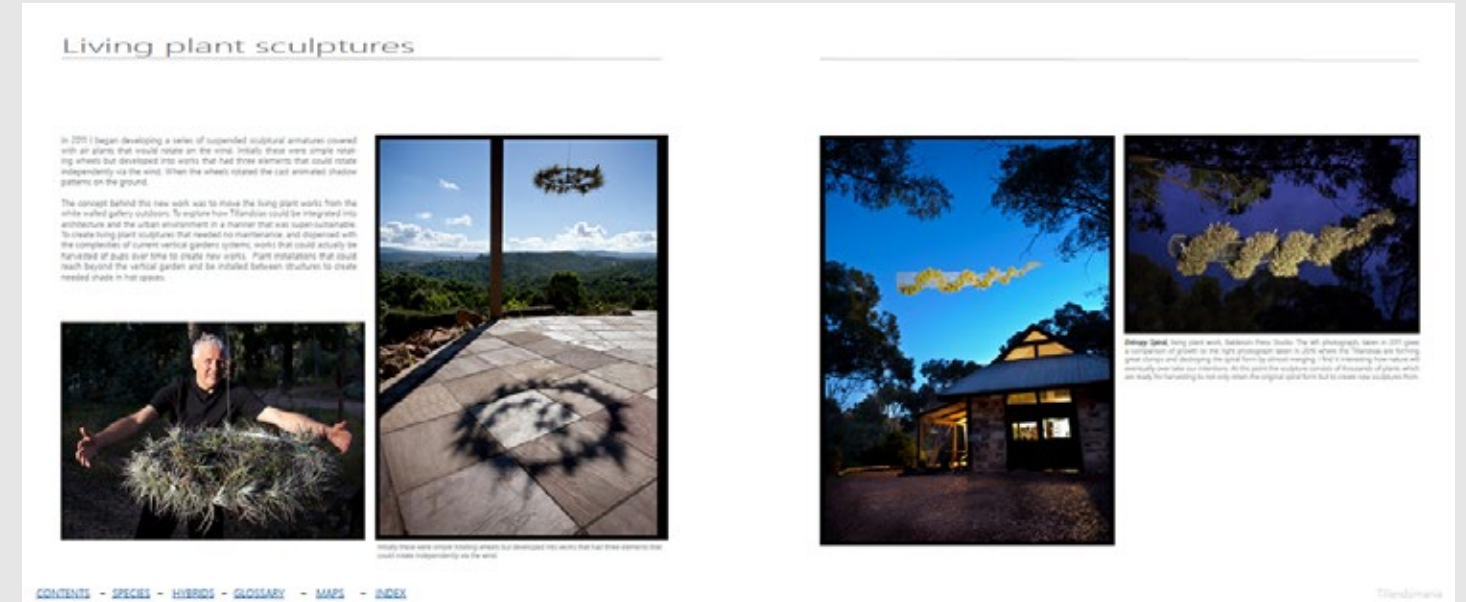
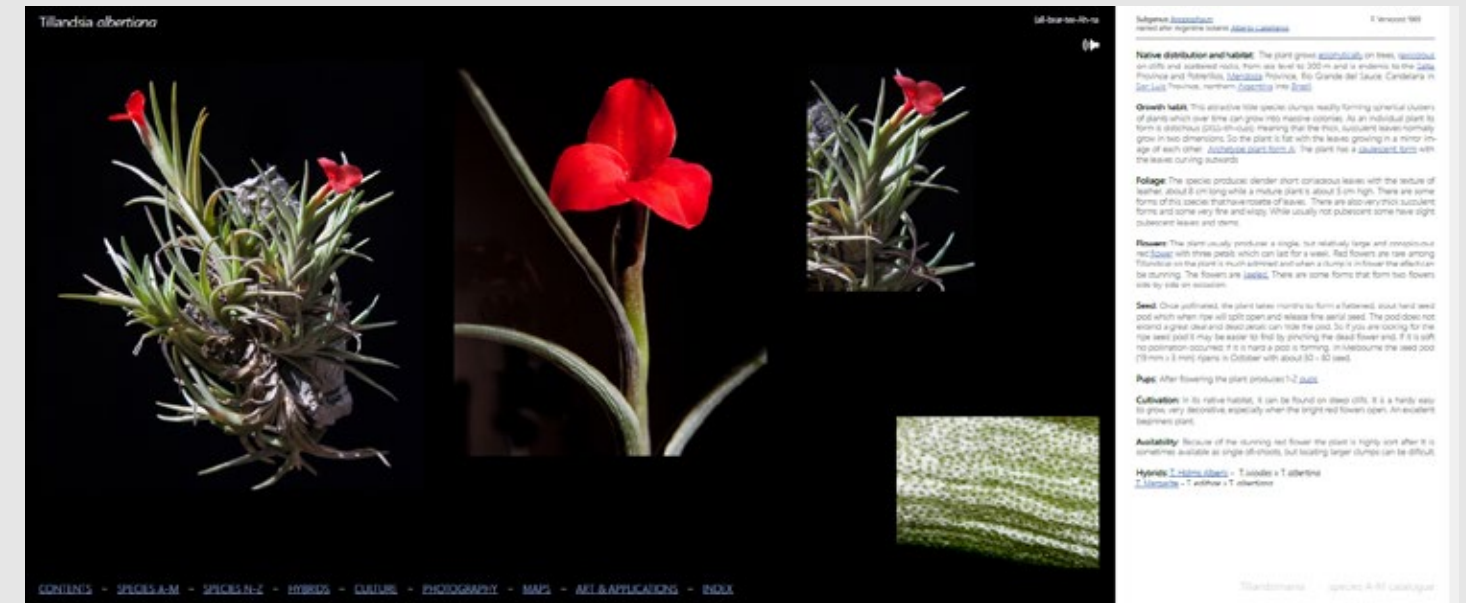
OMG - what a sensational work you have put together here. The download worked fine and I am just in awe of the information you have collected and preserved in this publication. Michael Cubitt

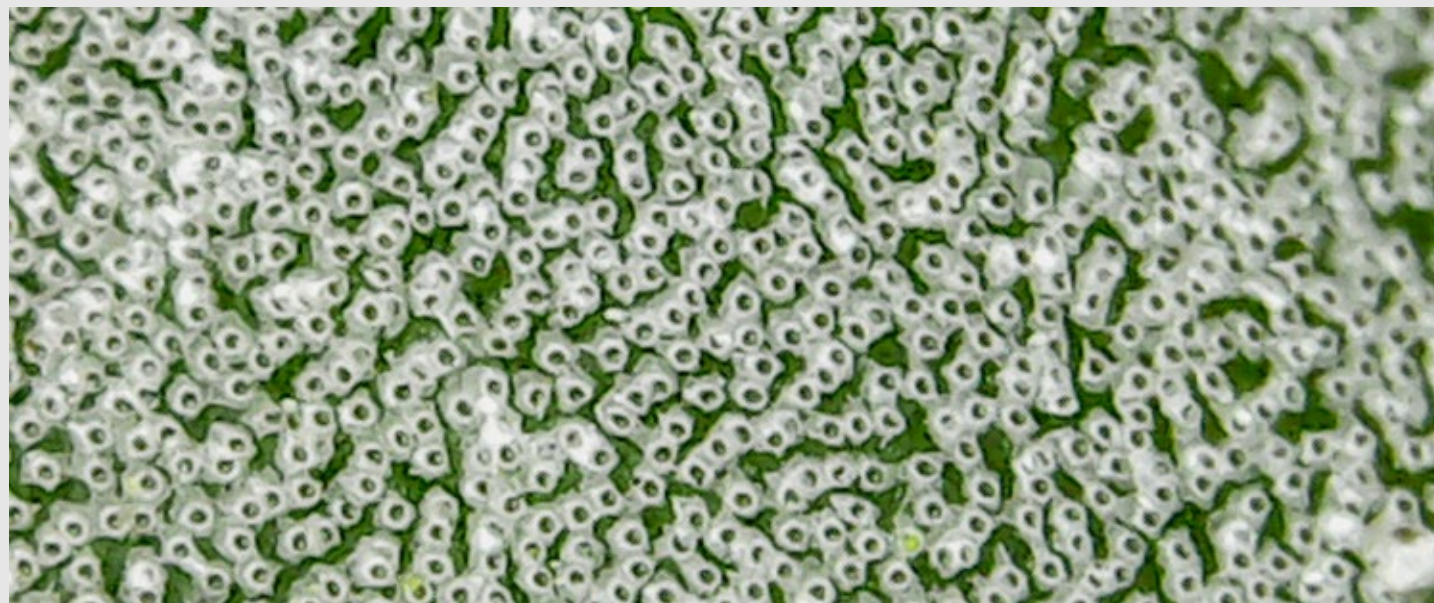
Brilliant work. Keep it up. - Graham Besgrove

thanks for your amazing book!!! - keehee

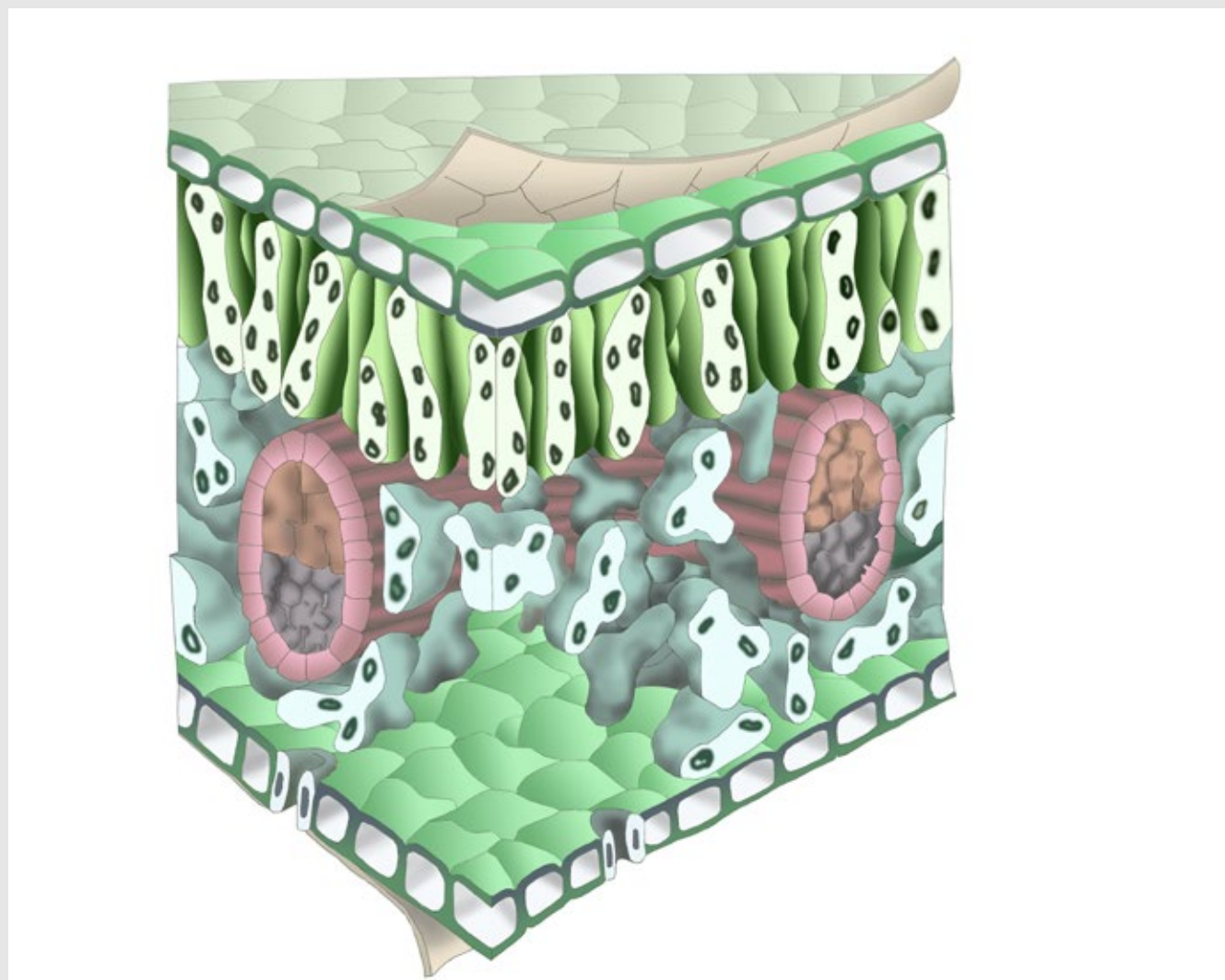
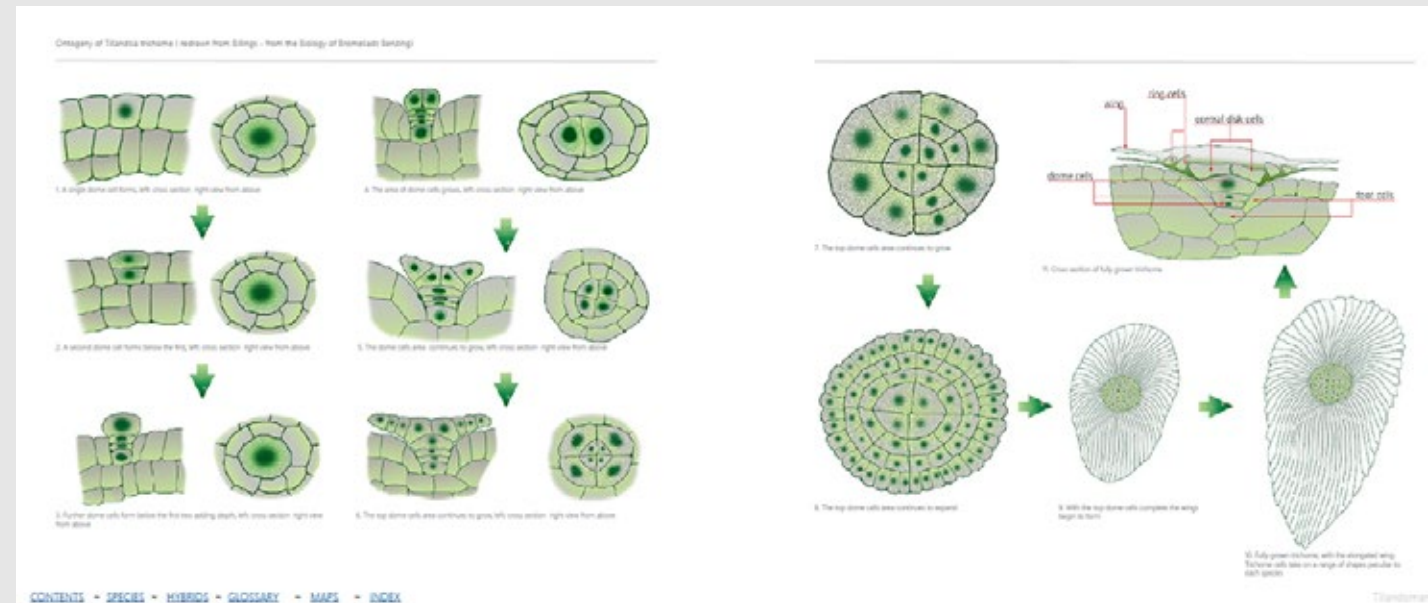
Wow Lloyd, this is amazing! Thank you!! - Megan Collis

Examples of double page spreads

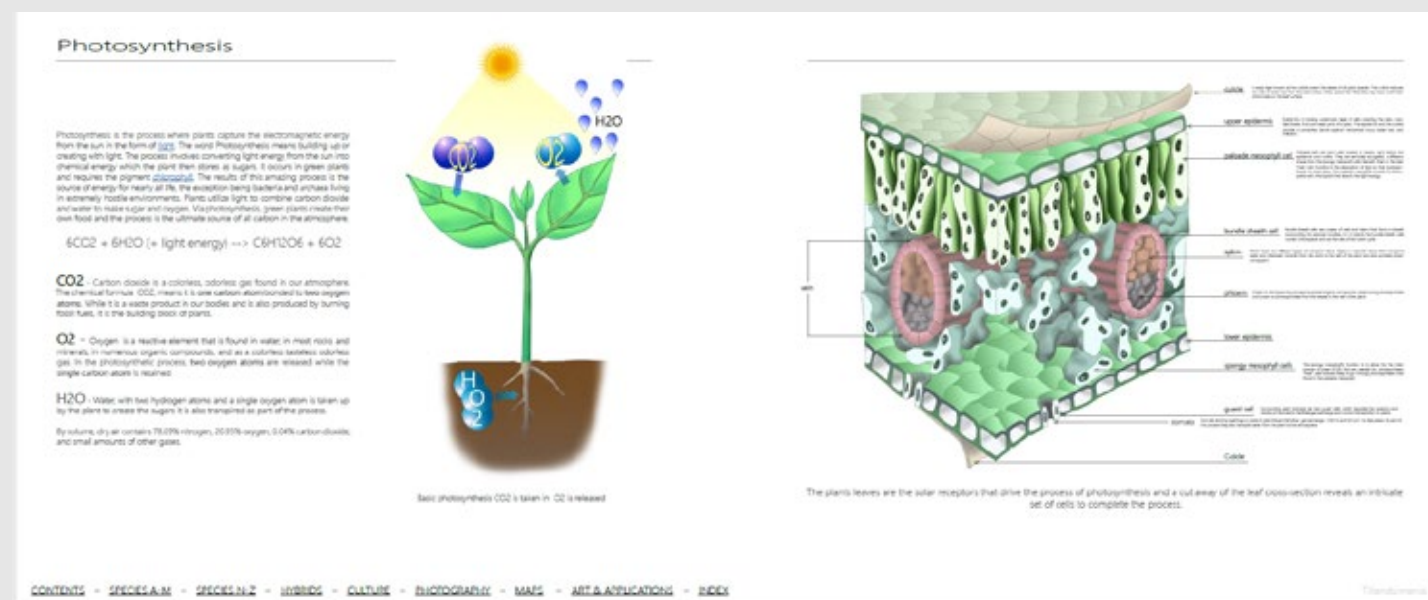




Microscopic images of Trichome patterns

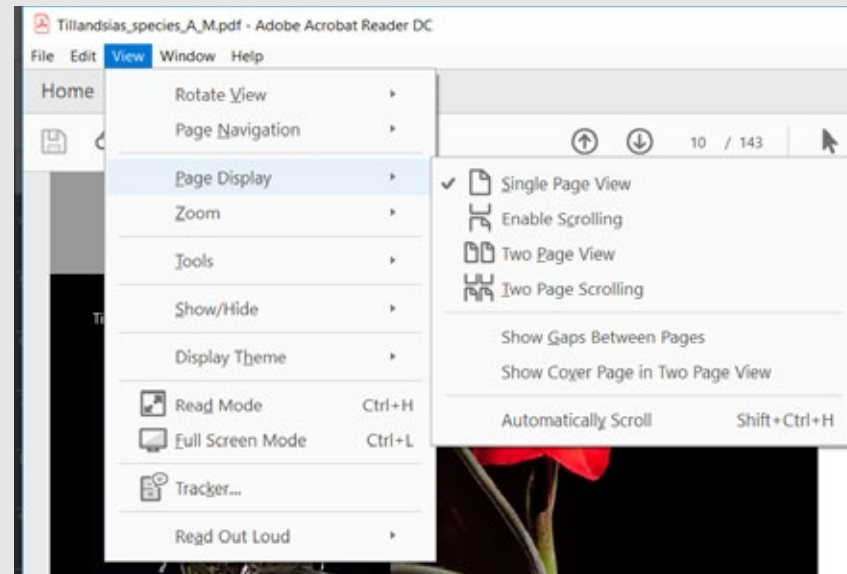


Detailed illustrations



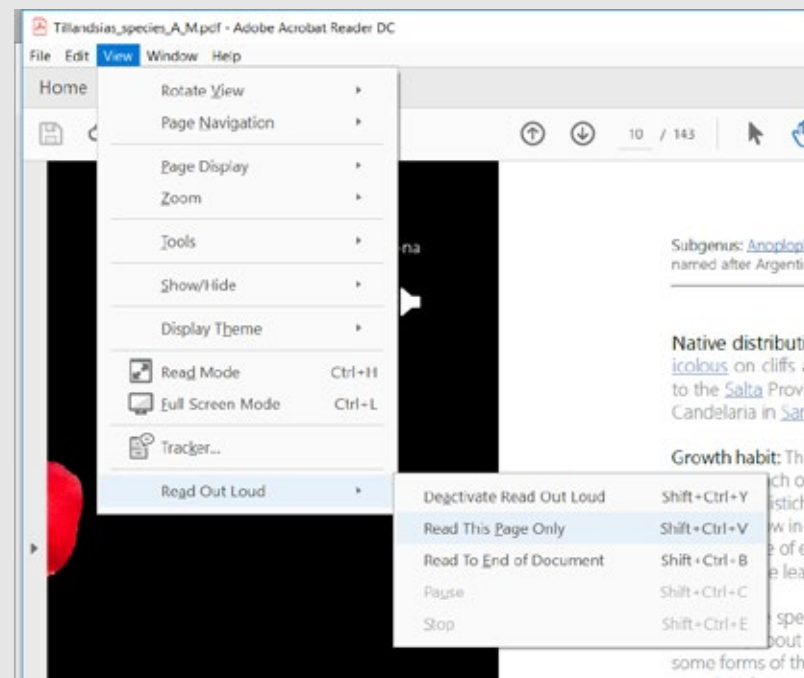
Viewing a Document

You can alter how the pages, cover and spreads are presented on the screen. Go to VIEW > PAGE DISPLAY then select the appropriate option.



Read out loud

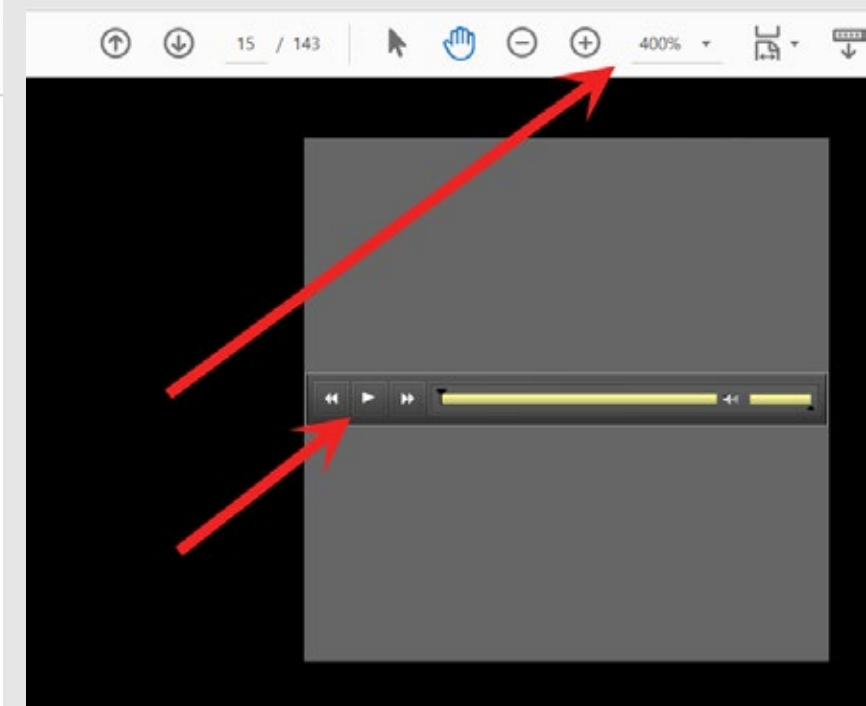
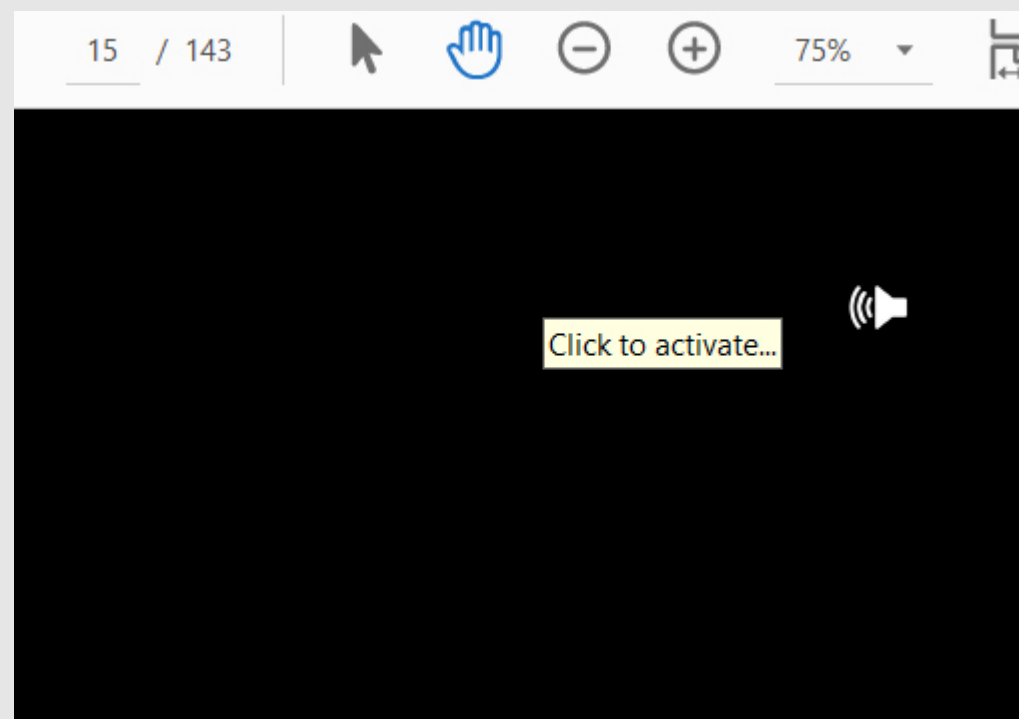
If you do not want to read the text, you can even have the document read out to you. The voice is a bit robotic but it works surprisingly well. Select VIEW > READ OUT LOAD > READ THIS PAGE ONLY - OR READ TO END OF DOCUMENT



Sound files

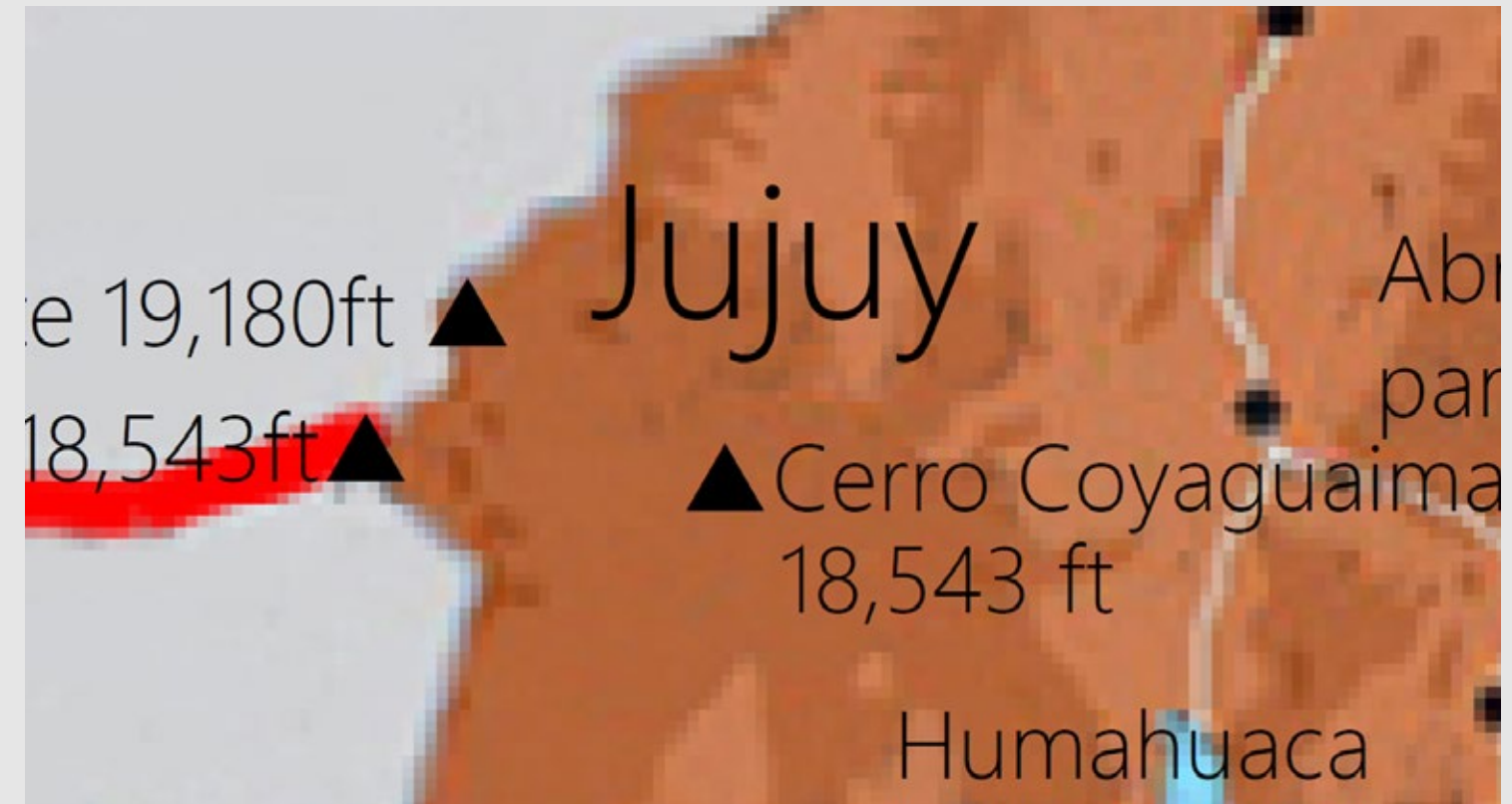
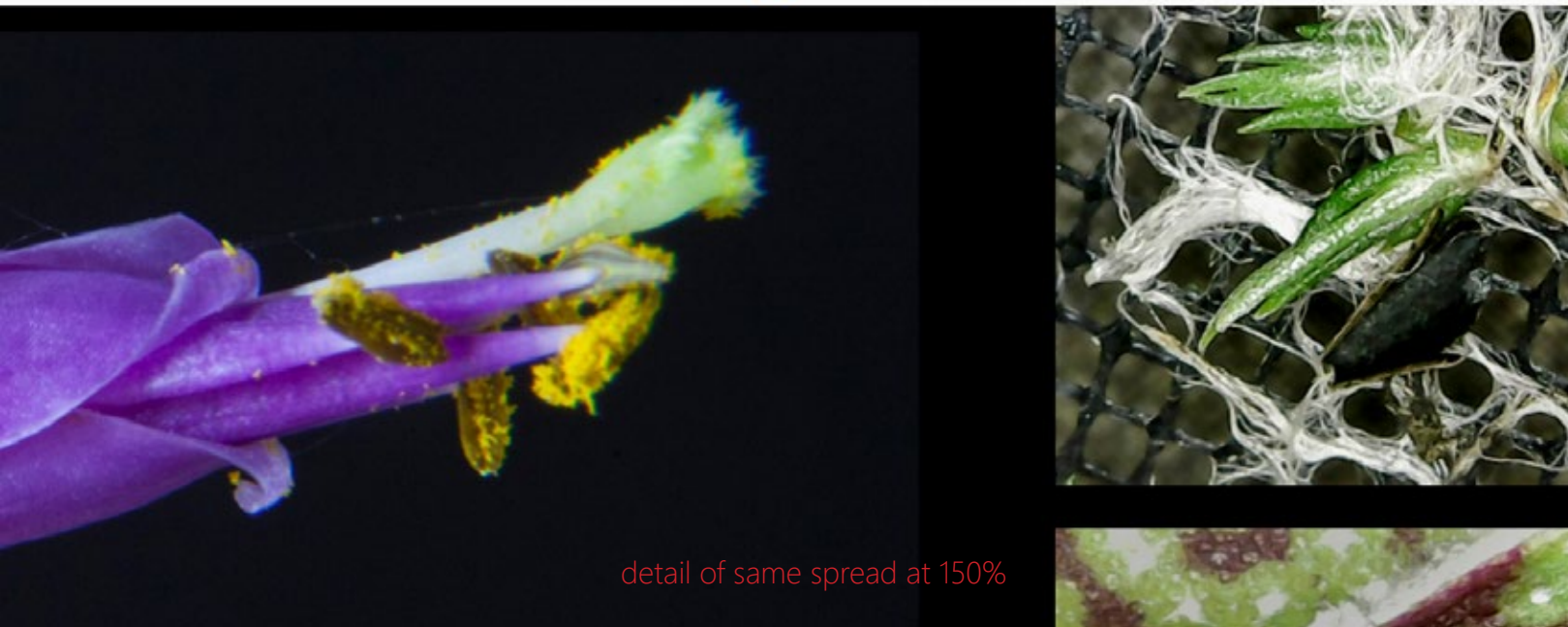
Some of the plant entries have a small sound file embedded which can be activated to offer an indication of the pronunciation. This feature only works for the interactive documents, not the low resolution files.

Click on the speaker icon to activate. The player will activate - it is easier to use at a larger magnification - 400% - Click the + or - button.



Flexible enlargement

As a high resolution PDF the document can be enlarged from 1% to 6400% which offers great flexibility and the ability to read the text without reading glasses.

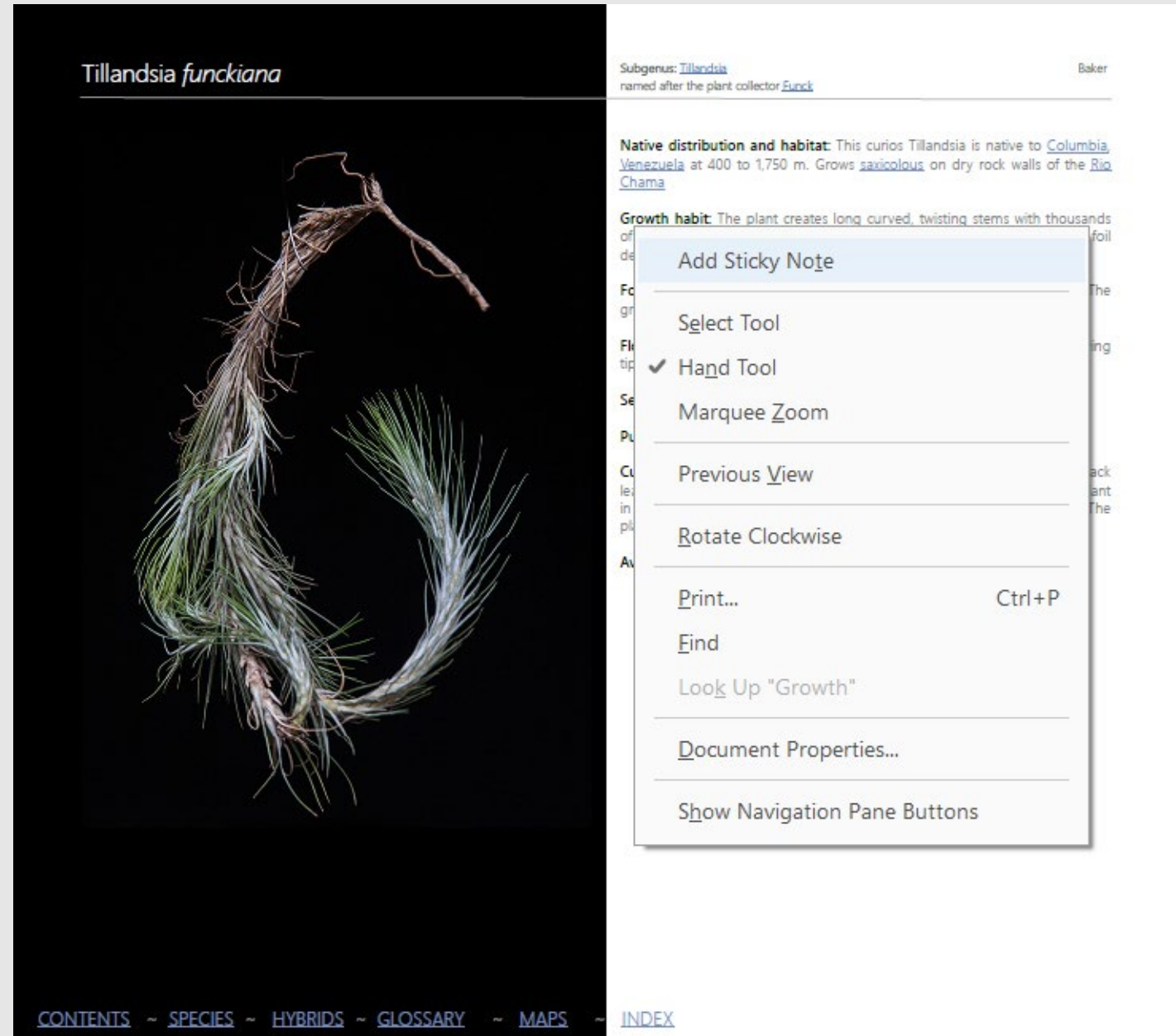


detail of map at 2400%
Note the sharpness of the text to the background image

At 150ppi, the resolution is as high as possible, the images are Lossless which allows enlargements to 300-400% to look at the detail of the images. The texts are vector files which means they can be viewed at any enlargement (6400%) and remain perfectly sharp which is great for maps.

Add your own notes

At any point in the document you can right click and add a "Sticky note". This might be to add your own notes and information or to identify plants you have in your collection. You can also edit these notes at any time in the future. But if you add a note remember to SAVE the document rather than close it.



Tillandsia funckiana

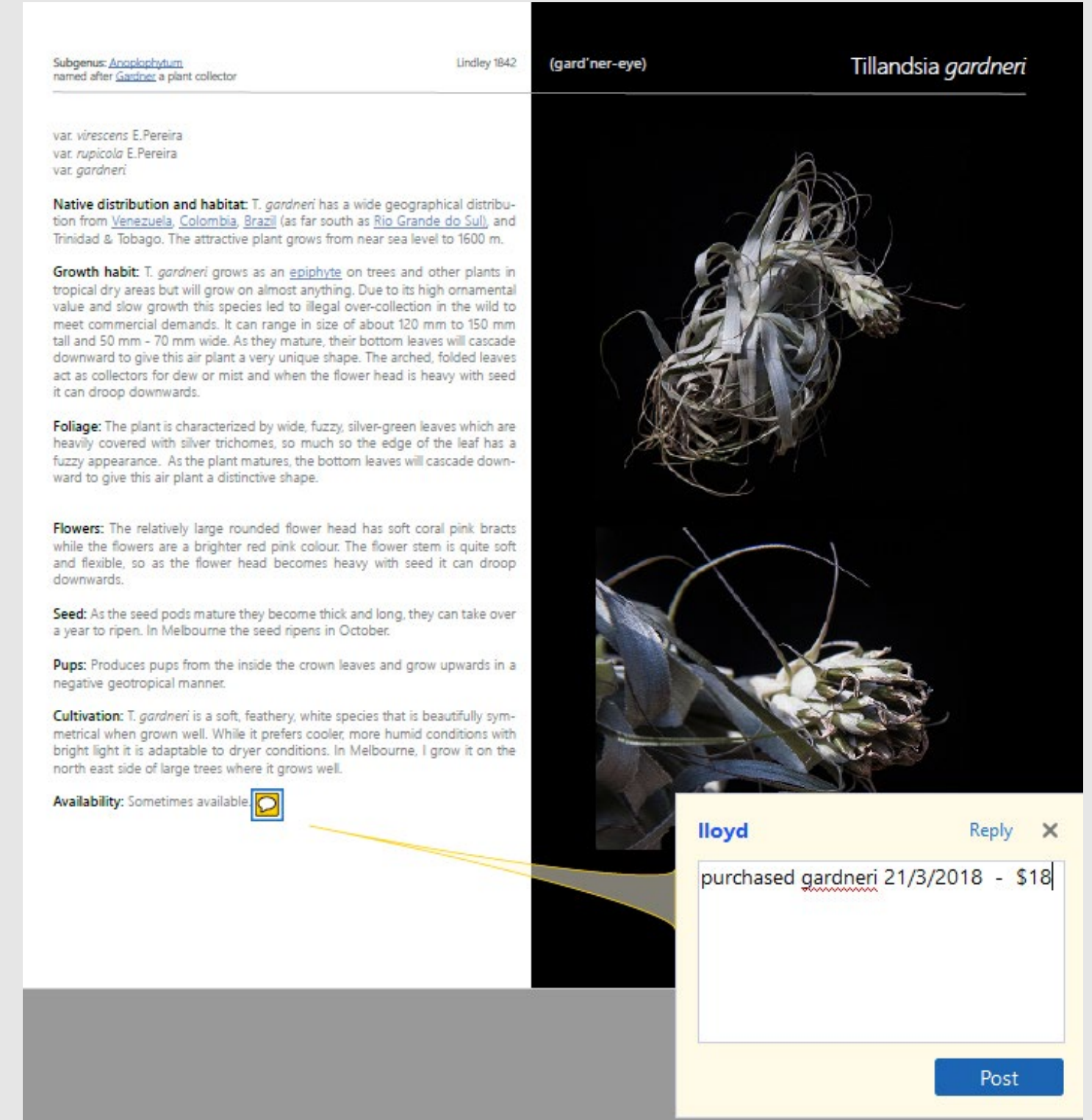
Subgenus: [Tillandsia](#) Baker
named after the plant collector [Funck](#)

Native distribution and habitat: This curious Tillandsia is native to [Columbia](#), [Venezuela](#) at 400 to 1,750 m. Grows [saxicolous](#) on dry rock walls of the [Rio Chama](#)

Growth habit: The plant creates long curved, twisting stems with thousands of foil

- Add Sticky Note
- Select Tool
- ✓ Hand Tool
- Marquee Zoom
- Previous View
- Rotate Clockwise
- Print... Ctrl+P
- Find
- Look Up "Growth"
- Document Properties...
- Show Navigation Pane Buttons

CONTENTS ~ SPECIES ~ HYBRIDS ~ GLOSSARY ~ MAPS ~ INDEX



Subgenus: [Anaclophytum](#) Lindley 1842
named after [Gardner](#) a plant collector

var. *virescens* E.Pereira
var. *rupicola* E.Pereira
var. *gardneri*

Native distribution and habitat: *T. gardneri* has a wide geographical distribution from [Venezuela](#), [Colombia](#), [Brazil](#) (as far south as [Rio Grande do Sul](#)), and [Trinidad & Tobago](#). The attractive plant grows from near sea level to 1600 m.

Growth habit: *T. gardneri* grows as an [epiphyte](#) on trees and other plants in tropical dry areas but will grow on almost anything. Due to its high ornamental value and slow growth this species led to illegal over-collection in the wild to meet commercial demands. It can range in size of about 120 mm to 150 mm tall and 50 mm - 70 mm wide. As they mature, their bottom leaves will cascade downward to give this air plant a very unique shape. The arched, folded leaves act as collectors for dew or mist and when the flower head is heavy with seed it can droop downwards.


Foliage: The plant is characterized by wide, fuzzy, silver-green leaves which are heavily covered with silver trichomes, so much so the edge of the leaf has a fuzzy appearance. As the plant matures, the bottom leaves will cascade downward to give this air plant a distinctive shape.

Flowers: The relatively large rounded flower head has soft coral pink bracts while the flowers are a brighter red pink colour. The flower stem is quite soft and flexible, so as the flower head becomes heavy with seed it can droop downwards.

Seed: As the seed pods mature they become thick and long, they can take over a year to ripen. In Melbourne the seed ripens in October.

Pups: Produces pups from the inside the crown leaves and grow upwards in a negative geotropical manner.

Cultivation: *T. gardneri* is a soft, feathery, white species that is beautifully symmetrical when grown well. While it prefers cooler, more humid conditions with bright light it is adaptable to dryer conditions. In Melbourne, I grow it on the north east side of large trees where it grows well.

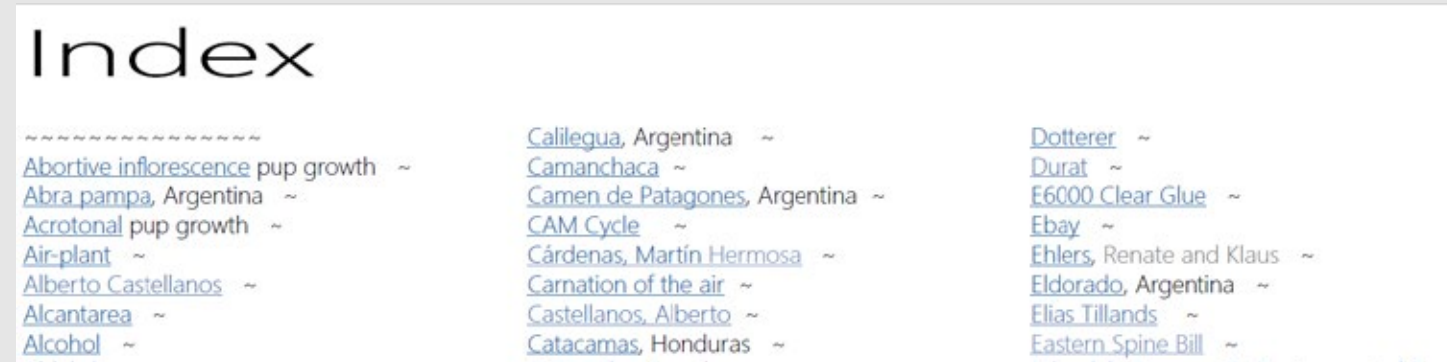
Availability: Sometimes available 

(gard'ner-eye) Tillandsia gardneri

lloyd Reply X
purchased gardneri 21/3/2018 - \$18
Post

Easy navigation

The high resolution documents are cross-referenced with active hyper links similar to a web site, which allows easy access from one aspect of the document to another, and between documents As long as the document files are in the SAME FOLDER the links will move across documents.



For instance the [INDEX](#) offers a direct link to the exact text on a specific page in the right document.

Native distribution and habitat: The species is native to [Minas Gerais, Brazil](#) and found at elevations up to 800 m

If the document is viewed at or greater than 100% the link will go directly to that page with the exact text at the very top right as in the screen shot below for Minas Gerais. However if the enlargement is less than 100% the link will just go to the page.



Load a low resolution copy to your phone

The high res PDF files are large - Depending upon the power of your computer this means the file may run slow. But included on the DVD is a low res version at 72ppi with the "Lossey" images which reduces the quality considerably – but the file is considerably reduced. As a handy reference you can also copy the file to your phone or other device and have with you at all times which allows readable information on any public transport or a plant to be checked when purchasing.

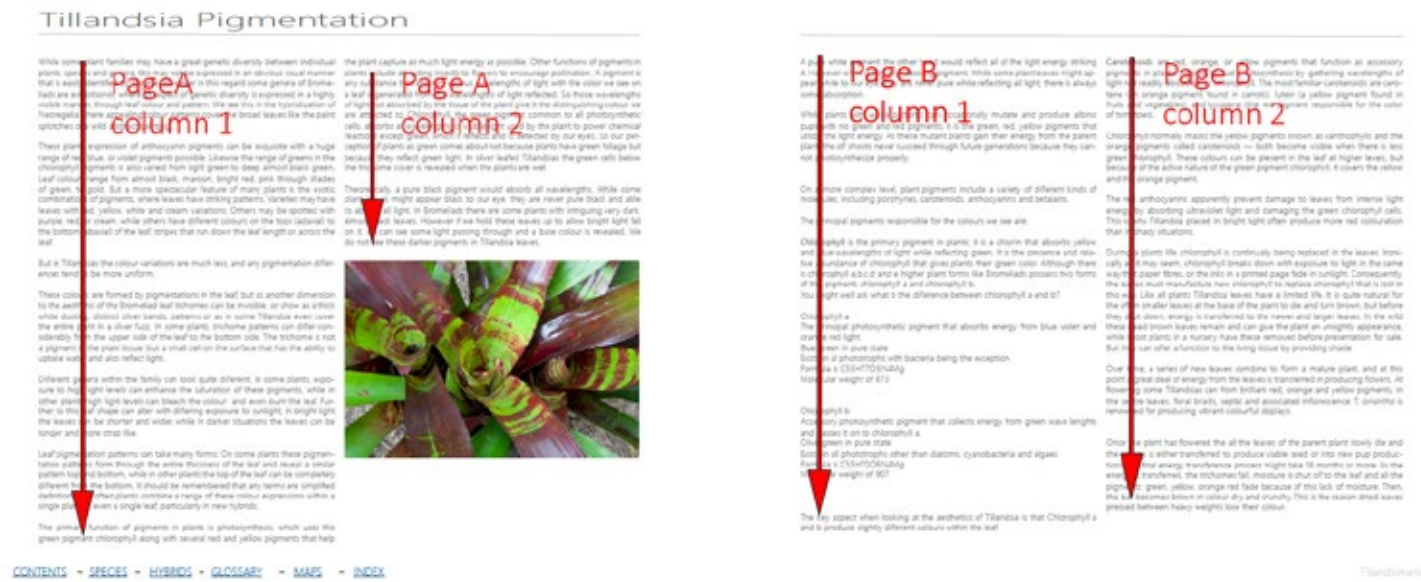


Work in progress

As an open digital document it is something I work on regularly. Undoubtedly you will find areas uncompleted, mistakes, etc. For instance at the moment I am working on the maps. In time I hope to fill any existing holes and dig entirely new ones. An updated PDF will be offered at the beginning of each year.

Layout

The lay out for the book is a single page cover with double spread - that is 2 pages on a screen. So what looks like a single page is actually two pages or the double page spread. No text runs the entire width of both pages so if you enlarge the page to 100% you should easily be able to read the text body. To make reading easier, the text body on each page is broken into 2 columns and is designed to read down the left column then the right. Off course you will need to navigate the document by scrolling across to the adjacent page or scrolling down as needed.



Tillandsimania Supporter

Through purchasing the DVD you become a supporter of this ongoing Tillandsia research project.

Copyright

As you can appreciate there have been many 1,000s of hours work in the production and as a PDF it is easy to copy and pass on to other Tillandsia enthusiasts. However, it would be appreciated that you respect the copyright and rather than pass on free, encourage others to purchase a personal copy. This gives me the funds and incentive to keep working on the project and refine it in the future.

Supporter discount

When you purchase, you become a valued supporter to the project. This also affords you a discount on the updated version of the ebook released at the beginning of the year.

Cost \$30 - or if you supported the project last year - update \$20



Lloyd Godman was head of the photographic section of the Dunedin Art School for 20 years and then taught at RMIT for a further 9 years. From 1996, his work moved from camera based images to explore light sensitivity where he grew images into the leaves of Bromeliad plants. Then followed a series of gallery installations with plants which evolved into his current work with Tillandsias and the built environment. Now, he is seen as a leading ecological artist with The AGE newspaper referring to him as an ecological artist and extreme gardener. He is an experienced photographer and highly skilled in the use of Adobe Photoshop and Indesign which have been used extensively for this project.

Thank you for reading and I trust you enjoy the book.

**Contact lloydgodman@gmail.com
Order your copy**